



OUR STORY

Castell Coch or 'The Red Castle' is a castle in Cardiff, Wales. It was first built as a motte and bailey castle in medieval wales but was soon rebuilt in stone to make it stronger!



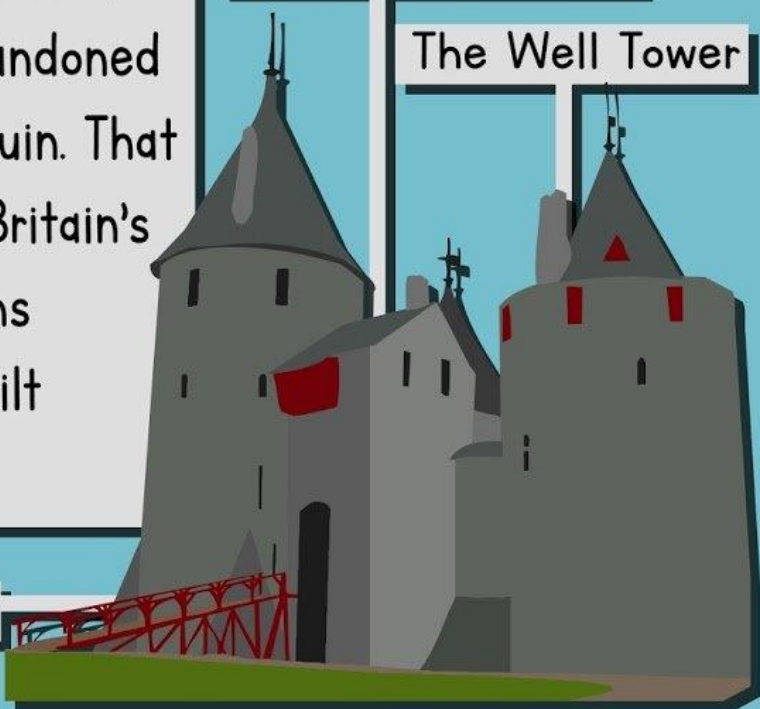
Example of a motte and bailey castle

Then, for hundreds of years it was abandoned and became a ruin. That is until one of Britain's richest Victorians rebuilt it. He built three towers.

The Kitchen Tower

The Well Tower

The Keep Tower



He put so much detail inside all the rooms! The Keep Tower is where he in put most of his work. In this tower you can see paintings and carvings of flowers and even Aesop's fables!



"The Tortoise and the Hare"

"The Dog and Its Reflection"



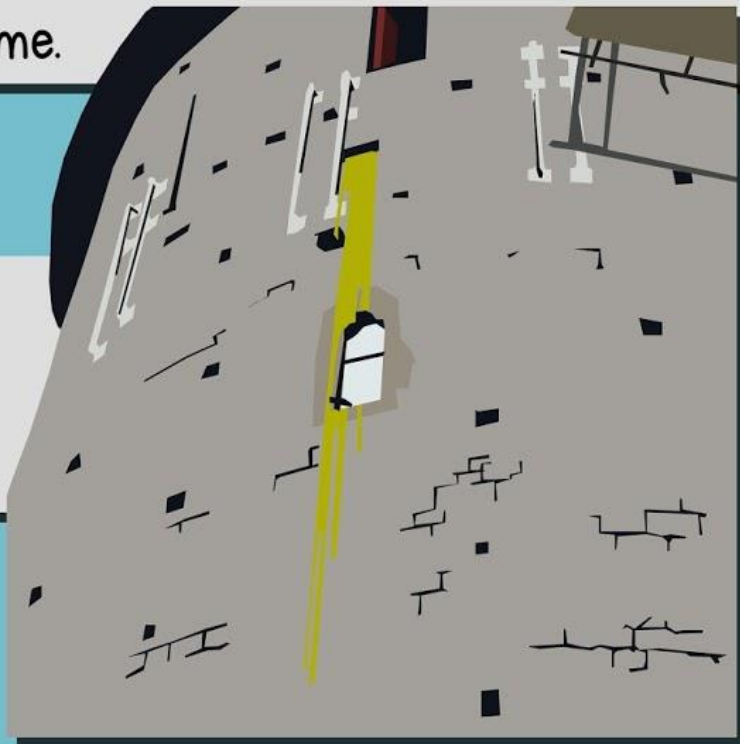
"The Quack Frog"

Recently it was discovered that the rooms are getting damaged. Experts found that water was leaking into the chimneys on the top of the tower and that it needed to be repaired.

However, the workers found quite a few obstacles in their way while repairing them! While working, they noticed honey bees flying around the tower. After looking further, the workers found a hive of more than 100,000 bees!

Immediately, work was stopped. A professional beekeeper was then contacted to help the bees find a safer home.

Honey dripping down the side of the Keep Tower.



There was so much honey, it started dripping down the walls of the tower!

The honeycomb had different colours. Some was light and some was dark. The lighter honey was discovered to have been made by the bees using blackberry nectar and the darker honey was made using bluebell nectar.




The bees were then safely taken away by the beekeeper.

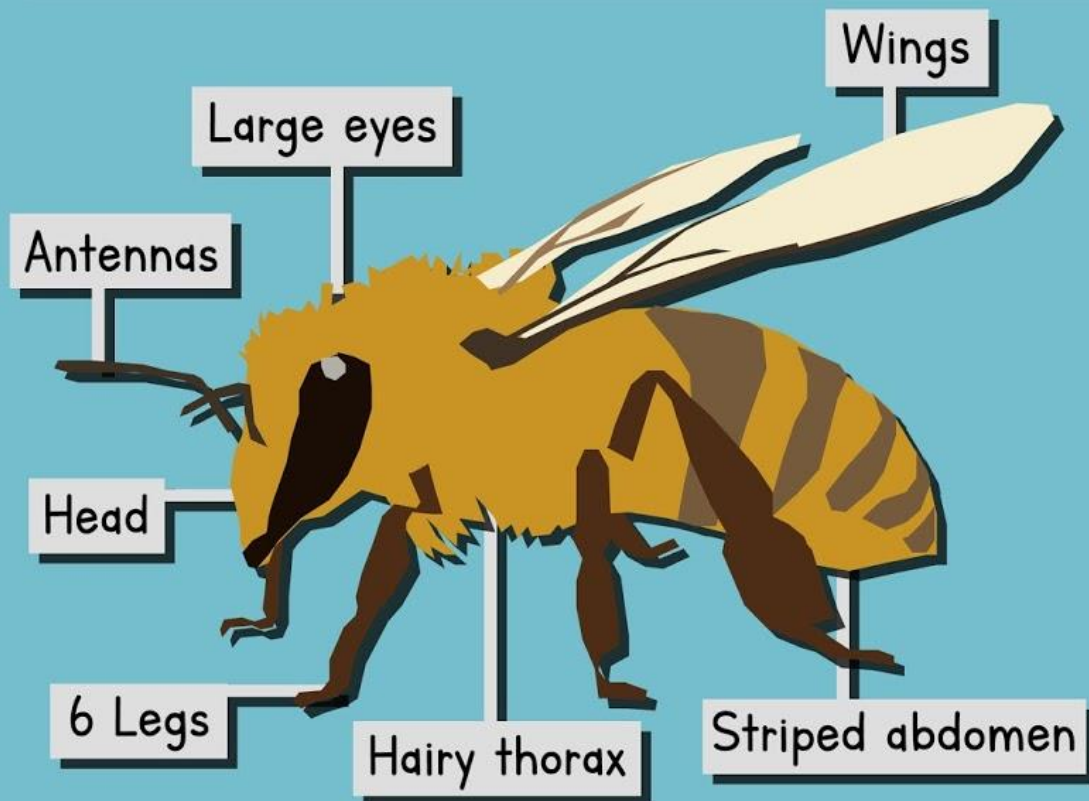
ALL ABOUT BEES



Bees are extremely important. They pollinate around a third of all the plants that we eat. Honeybees do 80% of this!

Honeybees face lots of challenges and if we did nothing to help them, they could die.

Honeybees are extremely organised. Each and every  has their own role to play in the colony. These jobs include builders, nurses, housekeepers and undertakers.

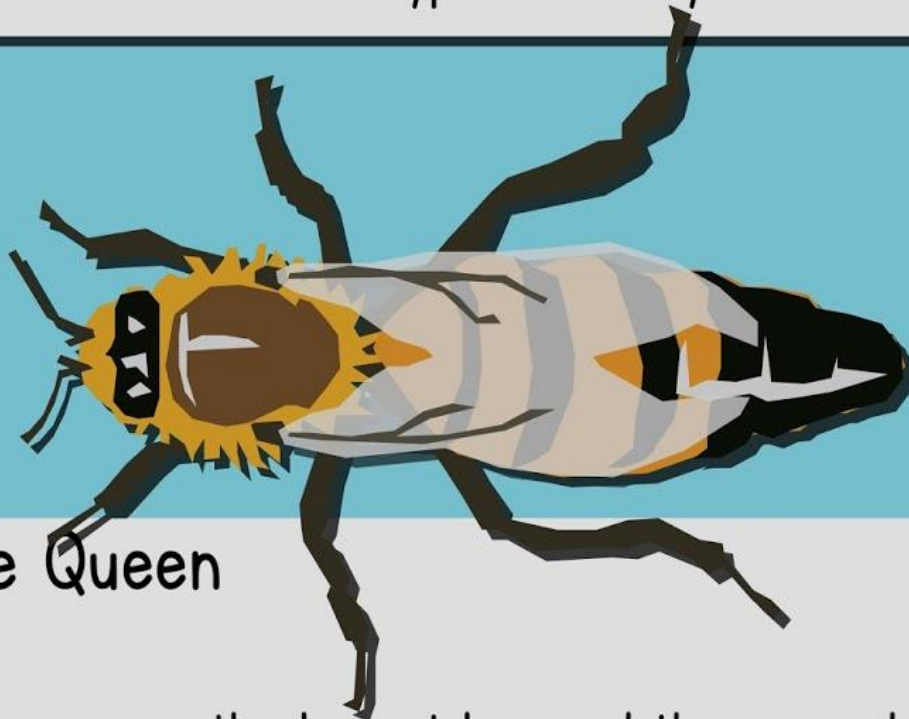


Honeybees life spans vary. The queen bee can live for years but most bees only live for a few weeks in summer (because they work so hard) and a few months in winter.

Did you know...?

The average honey  will make only one twelfth of a teaspoon of honey in its lifetime!

There are three main types of honeybee.



The Queen

The queen is the largest bee and there is only one in each hive. She lives up to 5 years and mates with the drones. She can have up to 2,000 eggs. Eggs that are fertilised become females (workers), eggs that are not become males (drones).

The Workers

All worker  are female but cannot reproduce.

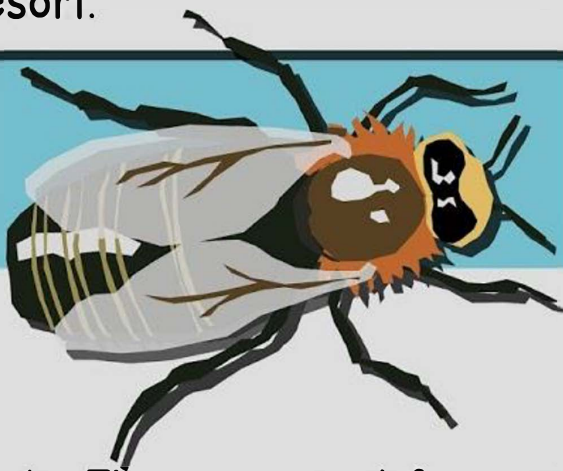
They live around 6 weeks in the summer and 6 months in the winter.

Nearly all bees in the hive are worker bees. They do a lot of jobs around the hive and when they are 21 days old, they begin collecting nectar. If a worker bee stings, it will die so they only sting as a last resort.



The Drones

All drones are male. They are used for mating with the queen. When a drone mates, it will die. The drones do not have a sting.



HOW TO HELP

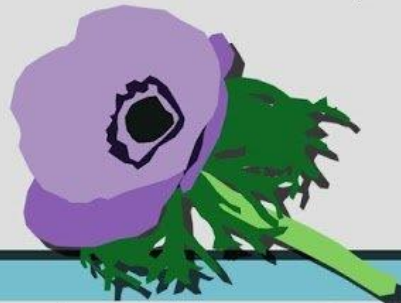
Bees are struggling to survive and we need to do all we can to help them.

The Welsh Beekeeper's Association represents around half of the beekeepers in the whole of Wales. They are extremely important in keeping the bee population healthy.

However, you do not have to be a beekeeper to help!



By simply planting certain types of plants, you can help with their survival. There are many types of flowers that are cheap to buy and easy to maintain.



So what plants can help the bees survive?

FLOWERS THAT CAN HELP

SPRING



Tulips - These are one of the first flowers to bloom in the spring and therefore very important for honeybees.

Chives - For chives to help bees, you need to let them flower. Honeybees love the light purple flowers chive plants make.



Rosemary - This is an easy plant to keep because it is cold resistant. The rosemary plant has blue and purple flowers.

SUMMER

Borage - Borage is an easy plant to grow. Its starry and deep blue flowers attract bees because of their large amount of nectar.





Sage - This plant lasts a long time. Honeybees are drawn to its blue and purple flowers at the end of its stalk.

Lavender - A very hardy plant, lavender shrub make blue and purple flowers that attract honeybees to their nectar.



Basil - Mostly known as a cooking ingredient but their white, goblet-like flowers are perfect for honeybees.

AUTUMN



Crysanthemum - Cold resistant, bright red, golden or lylac, this plant provides honeybees with food before they hibernate.

Jerusalem Artichoke - This plant has bright yellow flowers and is a member of the sunflower family.



HONEYBEE WORDSEARCH

L	I	U	P	B	I	D	K	E	A	I	E	Q	N	V	W	B	J
B	A	H	O	N	E	Y	O	V	C	Y	N	A	S	V	O	U	E
U	P	N	V	Q	Q	S	W	A	R	M	E	J	I	N	M	M	X
G	I	C	F	U	V	Q	G	N	H	Q	C	H	L	V	U	B	D
L	S	P	L	J	H	A	R	V	E	S	T	B	U	Q	D	L	R
W	Q	L	O	U	B	E	E	S	A	T	A	I	M	U	J	E	O
B	W	C	W	L	C	Q	J	S	N	Z	R	G	V	E	K	S	N
O	F	L	E	W	L	V	N	T	C	H	K	H	V	E	S	L	E
C	R	V	R	A	C	E	P	X	H	I	V	E	S	N	T	B	M
I	Q	P	S	X	L	O	N	X	S	N	A	B	U	Z	Z	Y	H
A	C	A	P	P	Y	B	C	U	Y	X	W	I	N	G	S	M	J
M	Y	R	S	T	I	N	G	H	G	O	B	T	H	K	V	U	Q

Find the following words in the puzzle.
Words are hidden across, up, down and diagonally!

HARVEST
BUMBLE
NECTAR
POLLEN
FLOWER

HONEY
HIVES
QUEEN
DRONE
WINGS

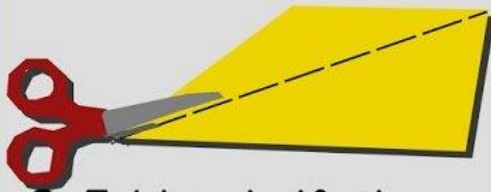
BEEES
BUZZ
WAX
SWARM
STING



HONEYBEE ORIGAMI

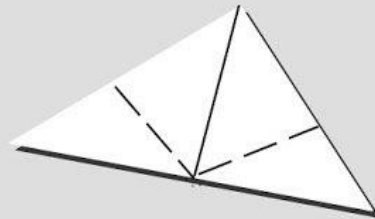
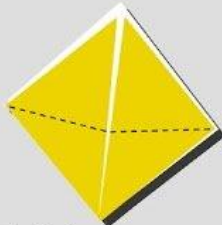


1. Colour a squared piece of paper yellow on one side.



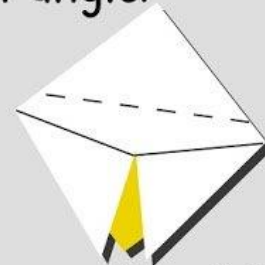
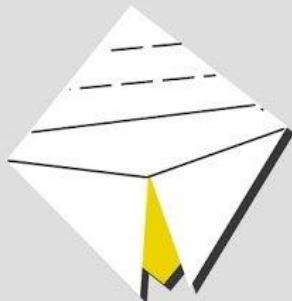
2. Cut it in half diagonally.

3. Fold in half, then unfold.



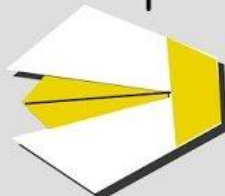
4. Fold up the two bottom corners.

5. Fold the corners back down at an angle.



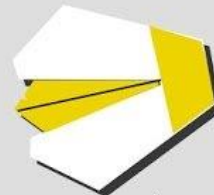
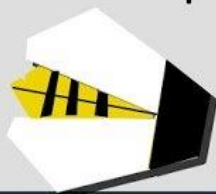
6. Fold down the top and unfold.

7. Fold the top section into thirds.



8. Fold back the sides.

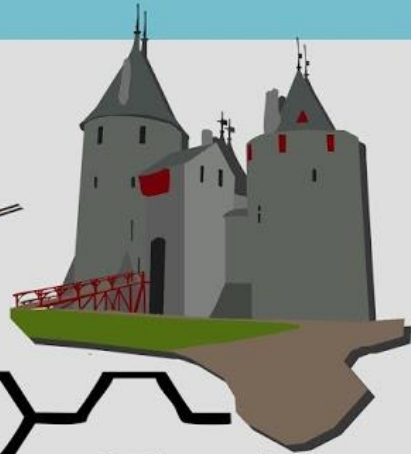
9. Fold the tips of the wings.



10. Finally, add stripes and a head.

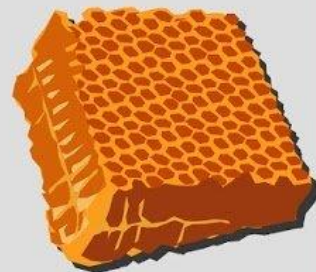
HIVE MAZE

Help the bee get
from Castell Coch
to the hive!



WORD MAKER

How many words can you make from the letters?



1. N E C T A R

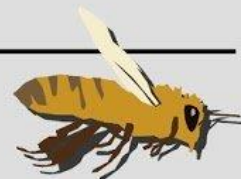
_____	_____	_____
_____	_____	_____
_____	_____	_____
_____	_____	_____
_____	_____	_____

2. F L O W E R



_____	_____	_____
_____	_____	_____
_____	_____	_____
_____	_____	_____
_____	_____	_____

3. S W A R M



_____	_____	_____
_____	_____	_____
_____	_____	_____
_____	_____	_____
_____	_____	_____

HOW TO MAKE A BEE NEST

You will need:

- 2 litre plastic bottle
- Scissors
- Bamboo canes of different thicknesses
- Twine



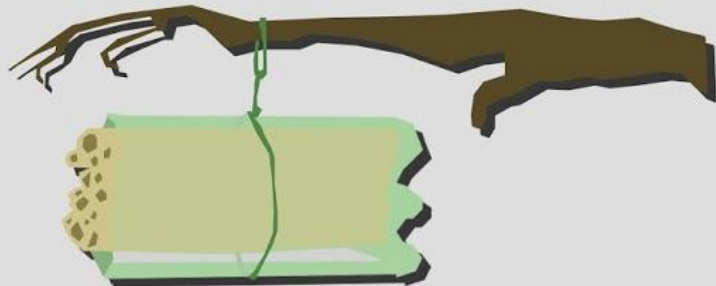
1. Cut off the top half of the bottle.



2. Measure and cut the bamboo canes so that they fit in the bottle.

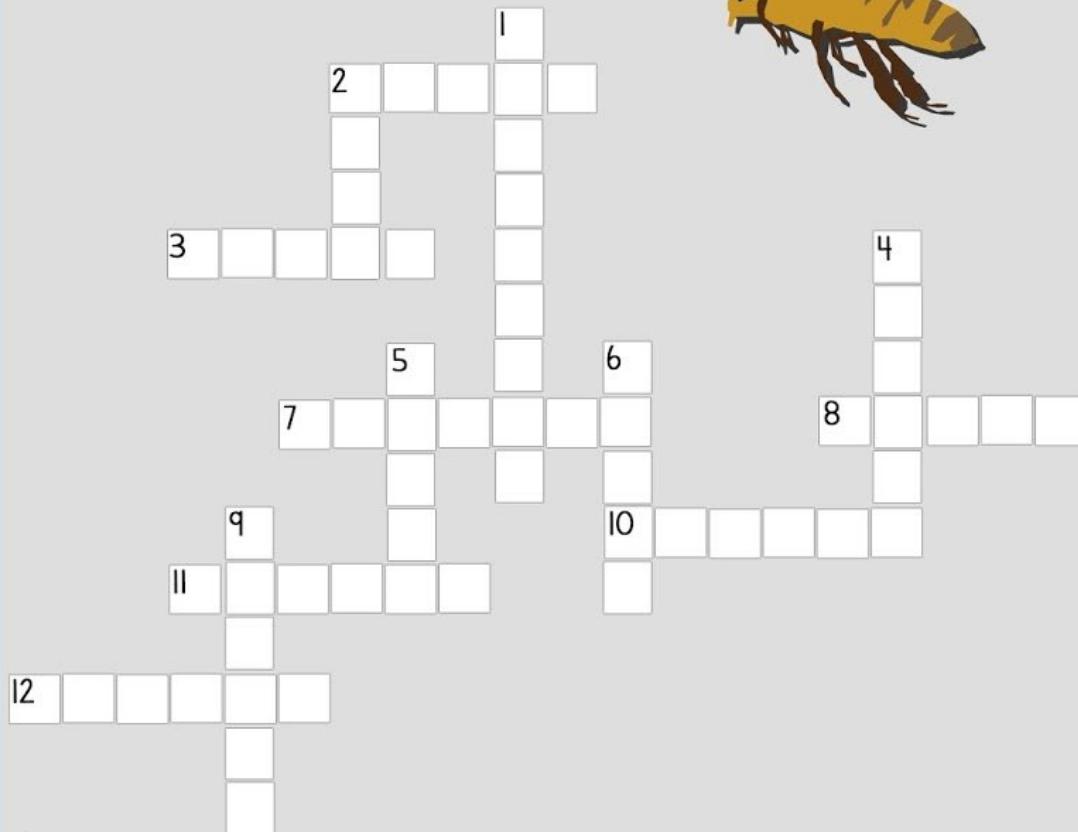


3. Tie twine around the bottle and hang it from a tree in a sheltered, sunny, dry spot.




CROSSWORD

Use the clues to find the words in the numbered squares.
All words are about honeybees.



Across

2. Made from nectar by bees.
3. Biggest bee in the hive.
7. Process when a bee collects nectar.
8. Large number of bees moving together.
10. Sweet liquid a plant makes.
11. Most common  in the hive.
12. Large, fluffy type of bee.

Down

1. Someone who looks after bees.
2. Where bees live.
4. Part of a plant where bees get nectar.
5. Male bee who mates with the queen.
6. Part of a bee it uses as a defence.
9. Powder made by a plant.